

APPENDIX B SELECT PHOTOGRAPHS



Photo DA01: View looking north from above left abutment of Dam A. Teck TSF and Seepage Pond 1 visible at top left of photo. Note upstream sand cell preparation. Dam B and Dam C visible at top right of photo.



Photo DA02: View looking south at left abutment of Dam A. Dam alignment follows road alignment. Note stakes on middle right of photo denoting downstream edge of till core to be placed as part of the 2014 construction season.



Photo DA03: View looking south at left abutment of Dam A from upstream limit of upstream sand cell at left abutment. West Dam visible at top of photo.



Photo DA04: View looking north at upstream end of sand cell and tailings beach on Dam A. Dam C visible in background right of photo.



Photo DA05: View looking south at left abutment of Dam A from upstream limit of upstream sand cell. West Dam visible at top left of photo.



Photo DA06: View looking northeast along secondary overflow spigot line on upstream sand cell on Dam A at approximately 1+700 m.



Photo DA07: View looking south toward left abutment of Dam A from approximately 1+700 m at boundary between upstream sand cell and core.



Photo DA08: View looking west at lateral boundary between upstream sand cells at approximately sta. 1+700 m. Primary cyclone visible in top left of photo.



Photo DA09: View looking north at right abutment of Dam A toward Dam B from crest at approximately sta. 1+700 m.



Photo DA10: View looking south toward left abutment of Dam A from upstream side of crest at approximately sta. 1+700 m.



Photo DA11: View looking east from downstream toe of Dam A at boundary with Dam B. South Dam and reclaim barge visible in upper mid-right of photo. Primary cyclone visible in upper left of photo.



Photo DA12: View looking southeast at downstream face of Dam A from downstream toe of Dam A at boundary with Dam B. West Dam visible in upper right of photo.



Photo DA13: View looking south from downstream toe of Dam A at boundary with Dam B. West Dam visible at top left of photo. Note change in downstream slope at toe near excavator, and stepped slope closer to dam crest.



Photo DA14: View looking south at downstream face of Dam A from crest at approximate mid-point of dam. Note stepped downstream slope due to mining of hydraulically placed sand.



Photo DA15: View looking west at downstream toe of Dam A and Seepage Pond 1. Teck TSF visible in upper right of photo.



Photo DA16: View looking south at downstream toe and face, and left abutment of Dam A from downstream toe near mid point of dam. Note dressed downstream face.



Photo DA17: View looking west at downstream toe of Dam A. Note loose saturated sand deposited at the toe of the dam immediately upstream of Seepage Pond 1 visible at top right of photo.



Photo DA18: View looking north at right abutment and downstream face and toe of Dam A from mid-slope of left abutment. Note uniform downstream face and change in slope toward downstream toe. Soft saturated sand at toe of dam.



Photo DA19: View looking north of downstream slope of Dam A from close to left abutment. Bench and stepped face due to mining of hydraulically placed sand.



Photo DA20: View looking east at left abutment just downstream of crest of Dam A where dam bends toward West Dam. Staking denotes upper limit of till core to be placed as part of the 2014 construction season.



Photo DA21: View looking north at Dam A downstream slope and crest from left abutment looking toward right abutment. Note stepped downstream slope from mining of hydraulically placed sand.



Photo DA22: View looking north at crest of Dam A and upstream sand cell. Dam C visible at top right of photo.



Photo DA23: Veiv of instrumentation leads on crest of Dam A looking northeast at approximately 1+700 m.



Photo DB01: View looking north at Dam B downstream face and toe from the left abutment crest at boundary with Dam A. Note stepped downstream face, and extent of filter at downstream toe.



Photo DB02: View looking north at Dam B downstream face and toe from the left abutment downstream toe at boundary with Dam A. Note stepped downstream face, and extent of filter at downstream toe.



Photo DB03: View looking northeast at Dam B downstream face and toe from the left abutment downstream toe at boundary with Dam A. Dam C visible in the background.



Photo DB04: View looking south at the downstream face and left abutment of Dam B from the downstream toe at approximately sta. 1+500 m.



Photo DB05: View looking north at the downstream face and right abutment of Dam B from the downstream toe at approximately sta. 1+450 m.



Photo DB06: View looking south at the downstream face and left abutment of Dam B from the downstream toe at approximately sta. 1+450 m.



Photo DB07: View looking south at the downstream face of Dam B from the downstream toe at approximately sta. 1+350 m.



Photo DB08: View looking northeast at the downstream toe at approximately sta. 1+300 m. Note erosion of downstream toe.



Photo DB09: View looking northeast at right abutment of Dam B from downstream toe. Left abutment of Dam C visible at top right of photo.



Photo DB10: View looking south at crest and downstream face of Dam B from right abutment. Note liner exposed on left side of photo and prepared bedding surface in anticipation of liner raise. West Dam visible at top left of photo.



Photo DB11: View looking south at crest of Dam B from right abutment. Note liner exposed on left side of photo and prepared bedding surface in anticipation of liner raise.



Photo DB12: View looking northeast at right abutment and crest of Dam B from downstream side of crest. Dam C visible at top right of photo. Note exposed liner and prepared slope for liner raise.



Photo DB13: View looking north at Dam B upstream limit of upstream sand cell from left abutment. Dam C visible at top right of photo.



Photo DB14: View looking west at downstream limit of prepared upstream sand cell on Dam B.



Photo DB15: View looking south at upstream limit of upstream sand cell from left abutment of Dam B toward Dam A. Sand cells being prepared for hydraulic sand placement.



Photo DB16: View looking east at secondary overflow discharge line on beach upstream of sand cell at left abutment of Dam B. Dam C and South Dam visible in the top left and right of photo, respectively.



Photo DB17: View looking north at upstream limit of upstream sand cell from right abutment of Dam B toward Dam C.



Photo DB18: View looking southeast at upstream sand cells being prepared on upstream face of Dam B at approximately sta. 1+450 m. West Dam visible in background.



Photo DB19: View looking north at upstream sand cells and crest of Dam B from approximately sta. 1+475 m. Transition between lined and unlined section of Dam B visible in crest offset with lined portion in background.



Photo DB20: View looking south at exposed liner on Dam B crest near right abutment. Note damage to liner caused by excavation to expose liner in the process of being repaired in anticipation of liner raise.



Photo DB21: View looking northeast at exposed liner at right abutment of Dam B and left abutment of Dam C. Note damage to liner caused during excavation to expose liner to be repaired.



Photo DB22: View looking north at exposed liner being cleaned and repaired in anticipation of liner raise. At approximately sta. 1+375 m on Dam B crest.



Photo DB23: Liner being placed on Dam B at approximately sta. 1+375 m. View looking northeast.



Photo DC01: View of Dam C from survey shed above right abutment looking west.



Photo DC02: View of Dam C from survey shed above right abutment looking northwest. Note Seepage Pond 3 to the upper right of the photo.



Photo DC03: View of Dam C upstream sand cells and beach looking southwest from survey shed above right abutment.



Photo DC04: View of water discharge from Pothook Pit upstream of Dam C. Looking south from right abutment of Dam C.



Photo DC05: View of tailings immediately upstream of Dam C looking south. Note crater in beach from rock thrown into tailings.



Photo DC06: View of upstream sand cells from right abutment of Dam C looking west. Note tailings that have been pushed into impoundment on left side of photo.



Photo DC07: View of spigot 3 on Dam C looking northwest. Note leaking valve.



Photo DC08: View of spigot 4 on Dam C looking northwest. Note leaking connection at valve.



Photo DC09: View of spigot 6 on Dam C looking northwest. Note leaking valve and ponded water downstream of header pipe.



Photo DC10: View of erosion in upstream sand cell berm due to leaking valve at spigot 3 looking south.



Photo DC11: View of Upstream sand cells of Dam C looking west. Dam B visible in the background. Note mining of cyclone sand for mechanical placement elsewhere on Dam C.



Photo DC12: View of left abutment of Dam C and the right abutment of Dam B from the upstream sand cell of Dam C looking southwest.



Photo DC13: View of excavation of hydraulically placed sand for use in Dam C construction looking east. Note sand cell decant pipe visible on middle right of photo.



Photo DC14: View of LLDPE liner exposed near left abutment of Dam C looking west. Note tears in liner from excavation and exposure of liner. All damage to liner upstream of seamed liner raise to be repaired.



Photo DC15: View looking northeast of crest from mid-point of Dam C. Right abutment of Dam C visible in top right of photo. Pounded water visible along trench where liner is exposed along the crest of the Dam C starter dam.



Photo DC16: View looking west along Dam C crest. Pounded water directed to sump and pumped to TSF impoundment.



Photo DC17: View of right abutment of Dam C from downstream edge of upstream sand cell looking east. Note ponding on crest and Lock-Block protection around instrumentation installed in Dam C starter dam.



Photo DC18: View looking south at tear in liner adjacent to anchor trench at approximately sta. 0+500 m. Damage done during liner exposure to be repaired if upstream of seaming to liner raise.



Photo DC19: View looking east at liner exposed along anchor trench on Dam C right abutment. Note tears in liner from excavation to expose liner. Damage to be repaired if upstream of seaming to liner raise.



Photo DC20: View looking southwest at sump and pump managing ponded water on Dam C crest at approximately sta. 0+750 m. Pump is cycled on and off as needed.



Photo DC21: View looking east toward right abutment of Dam C of crest and limit of downstream sand cell.



Photo DC22: View looking west toward bend in Dam C at sta. 0+900 m. Note exposed liner at mid-left of photo.



Photo DC23: View looking northeast at crest of Dam C from adjacent to left abutment of Dam C.



Photo DC24: View looking west from right abutment at downstream face and toe of Dam C. Note uniform downstream slope and filter stockpiles at top right of photo. Downstream face has been sprayed with polymer to prevent dusting.



Photo DC25: View looking southwest at instrument leads and decant pipe on downstream face of Dam C at approximately sta. 0+600 m.



Photo DC26: View looking west from downstream toe of Dam C at approximately sta. 0+600 m.



Photo DC27: View looking east toward right abutment of Dam C from downstream toe at approximately sta. 0+800 m. Note instrumentation leads at toe of dam mounted on Lock-Blocks.



Photo DC28: View looking west from downstream toe of Dam C at approximately sta. 0+850 m. Note till stockpile in background at excavator.



Photo DC29: View looking east toward right abutment of Dam C from downstream toe at approximately sta. 0+950 m.



Photo DC30: View looking southwest at downstream toe of Dam C from sta. 1+100 m. Right abutment of Dam B visible in background.



Photo DC31: View looking northeast at downstream toe of Dam C from approximately sta. 0+950 m.
Note filter stockpiles and tailings pipeline in background.



Photo DC32: View looking northeast at downstream toe from left abutment of Dam C.



Photo DC33: View looking south at left abutment of Dam C and right abutment of Dam B from downstream toe of Dam C. Note liner raise being prepared on Dam B in middle background of photo where trucks and personnel visible.



Photo DC34: View looking west from crest at right abutment of Dam C. Note survey tripod, and slope inclinometer protected by Lock-Blocks on downstream side of crest.



Photo DC35: View looking south west at instrumentation protected by Lock-Blocks on crest at right abutment of Dam C. Note pump used to manage ponded water in background.



Photo DC36: View looking west at inclinometer riser pipe recently installed on the crest of Dam C at approximately sta. 0+700 m. Note tire tracks from articulated trucks around inclinometer casing. Vibrating wire piezometer leads flagged in the background behind inclinometer casing.



Photo DC37: View looking southwest at instrumentation reporting to datalogger mounted on Lock-Blocks at downstream toe at right abutment of Dam C.



Photo SD01: View of South Dam upstream face and toe from left abutment looking toward right abutment.



Photo SD02: View of South Dam upstream face and toe from mid-way down the slope on left abutment looking toward right abutment.



Photo SD03: View of South Dam upstream toe from mid-way down the slope on left abutment looking toward upstream toe.



Photo SD04: View of right abutment and upstream face of South Dam from upstream toe.



Photo SD05: View of left abutment and upstream face of South Dam from upstream toe.



Photo SD06: View of South Dam upstream face and left abutment from mid-way down the slope on right abutment.



Photo SD07: View of reclaim barge and upstream toe of South Dam from mid-way up the right abutment on the upstream side. Note pond level relative to South Dam.



Photo SD08: View of South Dam upstream face and crest from right abutment looking toward left abutment. Primary cyclone visible in background.



Photo SD09: View of right abutment of South Dam from right abutment crest looking south.



Photo SD10: View of right abutment of South Dam from near left abutment on crest.



Photo SD11: View of downstream toe of South Dam from mid-point of dam crest.



Photo SD12: View of crest and the downstream face of the South Dam from the right abutment.



Photo SD13: View of the downstream face and toe from the right abutment crest of the South Dam.



Photo SD14: View of the downstream right abutment and toe from mid-way down the slope.



Photo SD15: View of the downstream face from the downstream toe of the South Dam. Note uniform slope and minimal vegetation.



Photo SD16: View of the right abutment and downstream face of the dam from the downstream toe of the South Dam.



Photo SD17: View of the left abutment and downstream face from the downstream toe of the South Dam.



Photo SD18: View of the downstream face and right abutment from the left abutment at the mid-height of the slope of the South Dam.



Photo SD19: View of the downstream toe and downstream face of the South Dam from the mid-point of the left abutment.



Photo SD20: View of the downstream face and toe from the left abutment crest of the South Dam.



Photo SD21: View of the crest and downstream face of the South Dam from the left abutment crest looking toward the right abutment.



Photo SD22: View of the left abutment and the primary cyclone from the left abutment of the South Dam looking north.



Photo SD23: View of Lock-Block protection around vibrating wire monument on downstream crest looking east at mid-point of South Dam.



Photo SD24: View of Lock-Block protection around inclinometer monument on downstream crest looking east near mid-point of South Dam. Settlement plate riser pipe visible in background.



Photo SD25: View of survey monument on the downstream crest of the South Dam near the mid-point of the dam looking east. Note lack of Lock-Block protection.



Photo SD26: View of monitoring well monument at the downstream toe of the South Dam looking northeast.



Photo WD01: View looking west at West Dam from above left abutment.



Photo WD02: View looking west at crest of West Dam toward right abutment from left abutment.



Photo WD03: View of upstream face and toe of West Dam from left abutment. Dam A and Teck TSF visible in upper right of photo. Note location of tailings and pond relative to the upstream toe of the West Dam.



Photo WD04: View of the upstream toe of the West Dam from the crest at the mid-point of the dam looking north. Dam B and C visible in the background. Note ponding at the upstream toe of the West Dam.



Photo WD05: View of the crest and left abutment of the West Dam from the mid-point of the dam at the upstream side of the crest.



Photo WD06: View of the upstream face and toe from the right abutment of the West Dam looking toward the left abutment.



Photo WD07: View of the upstream face and left abutment of the West Dam from the upstream toe.



Photo WD08: View of the upstream face of the West Dam from the upstream toe.



Photo WD09: View of the upstream face and right abutment of the West Dam from the upstream toe.



Photo WD10: View of the upstream face of the West Dam from mid-way up the upstream face on the left abutment looking west.



Photo WD11: View of the downstream slope and toe of the West Dam from the rest at the left abutment looking west.



Photo WD12: View of the downstream face and left abutment of the West Dam from the downstream toe.



Photo WD13: View of the downstream face of the West Dam downstream toe. Note uniform slope and minimal vegetation.



Photo WD14: View of the downstream face and right abutment of the West Dam from the downstream toe.



Photo WD15: View of ponding at the downstream toe of the West Dam from just east of the downstream toe looking west.



Photo WD16: View of the downstream face and toe of the West Dam from the crest at the right abutment. Note ponding at the downstream toe.



Photo WD17: View of the crest and left abutment of the West Dam from the right abutment.



Photo WD18: View looking south at inclinometer monument installed on the downstream crest at the mid-point of the West Dam. Note rock protection. Settlement plate riser pipe on the downstream face of the dam visible in the background.



Photo WD19: View of ponding at the downstream toe of the West Dam from the crest at the mid-point the West Dam. Note settlement plate riser pipe and monitoring well monument at the middle left of the photo.



Photo WD20: View of survey monument on the downstream side of the crest of the West Dam near the mid-point of the dam.



Photo WD21: View of vibrating wire monument installed on the downstream side of the crest at the mid-point of the West Dam. Note rock protection around instrument housing.



Photo PD01: View of the Pothook Dam and Pothook Pit from the survey shed above the right abutment of Dam C looking north.



Photo PD02: View of the Pothook Pit from the survey shed above the right abutment of Dam C looking northeast.



Photo PD03: View of the upstream face and toe of the Pothook Dam at the right abutment. Note pipeline draped down the upstream face of the dam over liner in the background.

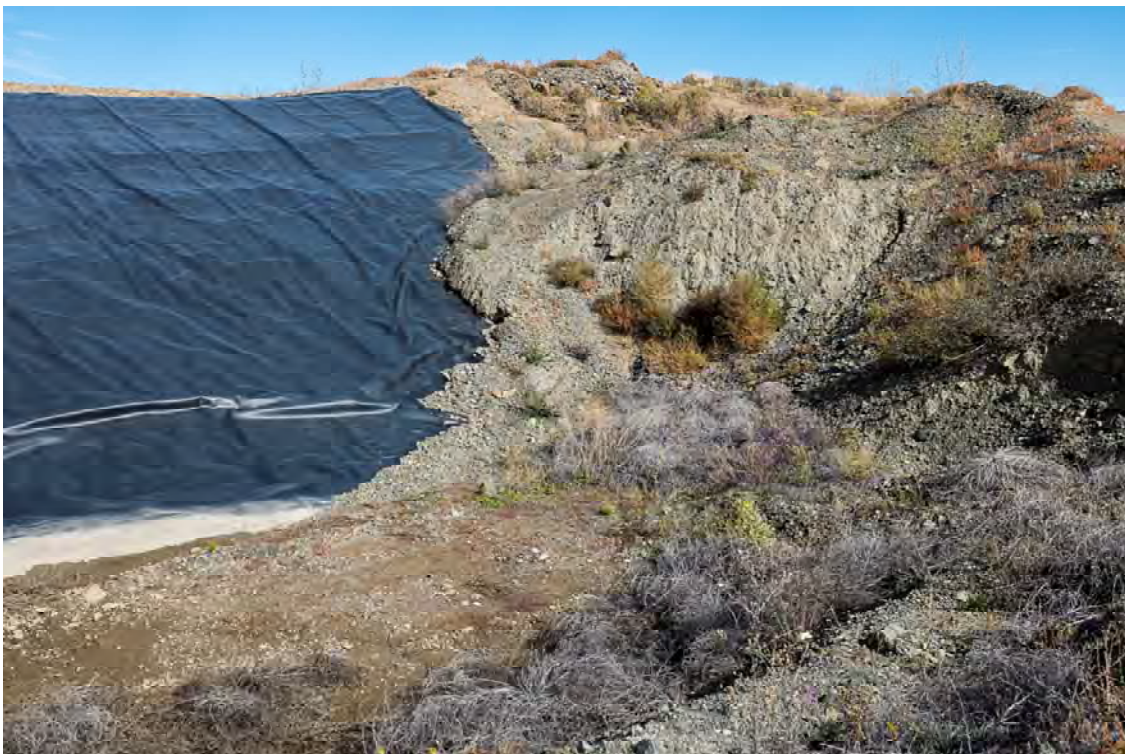


Photo PD04: View of the right abutment of the Pothook Dam from the upstream toe.



Photo PD05: View of abraision and liner bedding protrusion damage on the liner on Pothook Dam at the downstream toe one third of the way between the right abutment and the first dogleg of the dam.



Photo PD06: View of first dogleg in the Pothook Dam from the upstream toe.



Photo PD07: View of the first dogleg in the Pothook Dam from the upstream toe.



Photo PD08: View of punctures and abrasion damage on the upstream face of the Pothook Dam mid-way between the first dogleg and the tailings pipeline ramp.



Photo PD09: View of the south side of the tailings pipeline ramp looking north.



Photo PD10: View of abrasion damage and punctures in liner on upstream face of the Pothook Dam due to a waterline draped over liner south of the tailings pipeline ramp.



Photo PD11: View of upstream face and toe of the Pothook Dam between the tailings pipeline ramp and the second dogleg in the dam looking south. Primary cyclone visible in the background left of photo.



Photo PD12: View of the upstream face and toe of the Pothook Dam from the upstream toe just south of the tailings pipeline ramp looking north.



Photo PD13: View of the liner on the upstream face of the Pothook Dam at the left abutment looking south. Note punctures across the entire liner surface.



Photo PD14: View of the liner on the upstream face of the Pothook Dam adjacent to the left abutment looking south. Note various punctures across the entire liner.



Photo PD15: View of the left abutment of the Pothook Dam from the left abutment upstream toe looking south.



Photo PD16: View of the left abutment and upstream toe of the Pothook Dam from the crest looking north.



Photo PD17: View of the upstream face of the Pothook Dam from the crest looking west at the second dogleg. Note high water mark on the liner at the upstream toe.



Photo PD18: view of the left abutment and upstream face of the Pothook Dam from the crest at the second dogleg looking east.



Photo PD19: View of the left abutment and second dogleg of Pothook Dam looking southeast from crest. Primary cyclone and tailings line visible in background of photo. Note reclaim barge in Pothook Pit in upper left of photo.



Photo PD20: View of tailings pipeline ramp on upstream face of Pothook Dam adjacent to first dogleg looking north from crest. Note several pipelines on liner on upstream face of dam.



Photo PD21: Tailings pipeline discharge at base of tailings pipeline ramp on upstream face of Pothook Pit adjacent to first dogleg looking east.



Photo PD22: View of upstream face of Pothook Dam at first dogleg from the tailings pipeline ramp looking north. Note high water mark on liner at upstream toe.



Photo PD23: Note tear in liner at anchor trench just north of the tailings pipeline ramp. Defect identified for repair in 2013 annual inspection report.



Photo PD24: View of the upstream face and right abutment of the Pothook Dam from the crest at the first dogleg looking east.



Photo PD25: View of damaged survey prism at the downstream crest of Pothook Dam at the first dogleg.



Photo PD26: View of the downstream face of the Pothook Dam looking north from south of the first dogleg at mid-slope on the downstream face. Note air quality station at toe of dam.



Photo PD27: View of inclinometer casing on downstream side of crest of Pothook Dam adjacent to and north of tailings pipeline ramp.



Photo PD28: View of standpipe piezometer casing at downstream toe of Pothook Dam north of the tailings pipeline ramp.



Photo PD29: View looking north at downstream face of Pothook Dam north of the tailings pipeline ramp.



Photo PD30: View looking southeast at instrumentation on the downstream face and toe of the Pothook Dam just east of the first dogleg.



Photo PD31: View of the upstream face and crest of the Pothook Dam from the crest at the right abutment.



Photo PD32: View of the slope between the right abutment of the Pothook Dam and the Pothook Emergency Spillway on the north side of the Pothook Pit looking east from the pump ramp in the pit. Note erosion from pipeline discharge of water from the Afton Pit.



Photo PD33: View of pump station in the Pothook Pit upstream of the right abutment of the Pothook Dam looking west.



Photo PD34: View looking east at sinkholes in till along the north rim of the Pothook Pit between the Pothook Dam and the Emergency Spillway. Source of water likely pipelines from Afton Pit.



Photo PD35: View of scarps and tension cracks in till along the north rim of Pothook Pit adjacent to the Emergency Spillway looking east



Photo PD36: View of tension cracks in the upper till unit along the north rim of Pothook Pit adjacent to the Emergency Spillway looking west



Photo PD37: View of tension cracks in the upper till unit along the north rim of Pothook Pit from the inlet to the Emergency Spillway looking west



Photo PD38: View looking northwest at outlet of Pothook Pit Emergency Spillway. Afton Open Pit visible in background.



Photo PD39: View of riprap in Pothook Emergency Spillway looking south from spillway. Primary cyclone visible in background.



Photo PD40: View of eastern rim of Pothook Pit from west of Emergency Spillway looking southeast.



Photo PD41: View of south rim of Pothook Pit and left abutment of Pothook Dam from west of Emergency Spillway looking south.



Photo PD42: View looking west at left abutment of Pothook Dam and first dogleg from west of the Emergency Spillway.



Photo S101: View looking southwest at Seepage Pond 1 from boundary between Dam A and Dam B at downstream toe. Downstream toe of Dam A visible at top left of photo.



Photo S102: View of Seepage Pond 1 Dam crest and upstream face from right abutment.



Photo S103: View of Seepage Pond 1 Dam crest and downstream face from right abutment. Note rilling and minor erosion in foreground. Note vegetation on downstream face.



Photo S104: View of downstream face of Seepage Pond 1 Dam at right abutment. Note erosion and rilling of dam face.



Photo S105: View of downstream face from downstream toe of Seepage Pond 1 Dam looking toward right abutment. Note rilling and vegetation on dam face.



Photo S106: View of downstream face and crest from downstream toe looking east. Note rilling of dam face.



Photo S107: View of downstream face from downstream toe of Seepage Pond 1 Dam looking toward left abutment. Note rilling and vegetation on dam face.



Photo S108: View of monitoring well looking west from downstream toe of Seepage Pond 1. Teck TSF visible in background.



Photo S109: View of downstream face and crest of Seepage Pond 1 Dam from left abutment. Note vegetation on downstream face.



Photo S110: View of upstream face and crest of Seepage Pond 1 Dam crest from left abutment.



Photo S111: View of crest of Seepage Pond 1 Dam from left abutment.



Photo S112: View of downstream toe of Dam A from immediately upstream of Seepage Pond 1. Note accumulation of sediment at toe of dam.



Photo S113: View of Seepage Pond 1 and Dam from upstream end of impoundment. Note minor erosion of dam face and sediment collecting in pond. High water mark visible on face of dam.



Photo S201: View looking west at Seepage Pond 2 from the downstream face of Dam B. Teck TSF visible in the background.



Photo S202: View of the inlet channel and check berms upslope of Seepage Pond 2 looking southwest. Dam B visible in the background.



Photo S203: View of the inlet channel and erosion protection looking southwest from the north perimeter of Seepage Pond 2. Note sediment in pond and erosion at inlet from Dam B.



Photo S204: View looking west at Seepage Pond 2 from the inlet channel above impoundment. Teck TSF visible in background. Note erosion on slope between truck and impoundment.



Photo S205: View of Seepage Pond 2 from northwest end of impoundment. Dam B visible in the background. Note erosion on slope in foreground.



Photo S206: View looking east at inlet of Seepage Pond 2. Note sediment in impoundment. Dam B visible in the background right of the photo.



Photo S207: View looking north at northwest end of Seepage Pond 2. Note erosion of slope between truck and impoundment where inlet channel reports to impoundment. Teck TSF visible at top left of photo.



Photo S208: View of north perimeter of impoundment and inlet of Seepage Pond 2. Note minor rilling of impoundment slope in foreground. Dam B visible in background right of photo.



Photo S209: View looking south at western perimeter of Seepage Pond 2. Note uniform slope.



Photo S210: View looking west at downstream slope from Seepage Pond 2 and Teck TSF from western limit of Seepage Pond 2.



Photo S301: View looking northwest at Seepage Pond 3 from above the right abutment of Dam C adjacent to the survey shed. Dam C visible on the left side of the photo.



Photo S302: View of the north and east sides of Seepage Pond 3 from the west side.



Photo S303: View of the west and south sides of Seepage Pond 3. Note erosion of slopes in the vicinity of the inlet channels, and sediment in the vicinity of the decant pipe discharge.



Photo S304: View of the east side of Seepage Pond 3 from the north side looking south. Note sediment accumulated at the decant pipe discharge.



Photo S305: View of the west and north sides of Seepage Pond 3 from the north east corner looking west.



Photo S306: View of pipe outlet and liner slope protection on the west side of Seepage Pond 3.



Photo S307: View of the west and north sides of Seepage Pond 3 from the south east corner. E-House and tailings line visible in background.



Photo S308: View of south and west sides of Seepage Pond 3 from south east corner. Filter stockpiles visible in background left of photo.



Photo S309: View of south and east sides of Seepage Pond 3 from the south west corner. Primary Cyclone visible in top right of photo.



Photo S310: View of north and east sides of Seepage Pond 3 from south west corner. Tailings line visible in background of the photo.



Photo TL01: View looking east along tailings line from Seepage Pond 3 E-House upstream to Primary Cyclone on top right of photo.



Photo TL02: View looking south at valve and liner placed and yet to be seamed to contain and direct potential spills to Seepage Pond 3. Location of previous valve leak.



Photo TL03: View looking east at cracking from block cave subsidence along road to tailings facility just upstream of turn-off to Teck TSF. Cracking more pronounced than previous year.



Photo TL04: View of cracking on tailings line right of way on road to TSF just upstream of turn-off to Teck TSF. Note transition from HDPE to steel pipeline in background. Note crew straightening power poles in background left of photo.



Photo TL05: View of steel tailings line just upslope of mill. Note survey prisms strapped to tailings line. In some locations along line, cribbing used to elevate line where subsidence has occurred along right of way.



Photo TL06: View looking southeast along steel portion of tailings line from just upslope of mill.



Photo TL07: View looking southwest at steel tailings line adjacent to ore stockpile. Note sections in culverts, and drain line to spillpond.



Photo TL08: View of steel tailings line where it enters the mill.



Photo TL09: View of Spill Pond adjacent to mill. Note water level relative to inlet culverts and algae rafts.



Photo TL10: View looking south at the Spill Pond where the inlet line enters the pond. Note the water level relative to the inlet culvert level.



Photo TL11: View of Spill Pond from top of hill adjacent to ore stockpile looking north. Note water level relative to inlet culverts and algae rafts on pond surface at top right of photo.



Photo TL12: View of Spill Pond from top of hill adjacent to ore stockpile looking northeast. Note water level relative to inlet culverts and algae rafts on pond surface at top right of photo.



Photo TL13: View of Spill Pond from top of hill adjacent to ore stockpile looking east. Note water level inlet line.