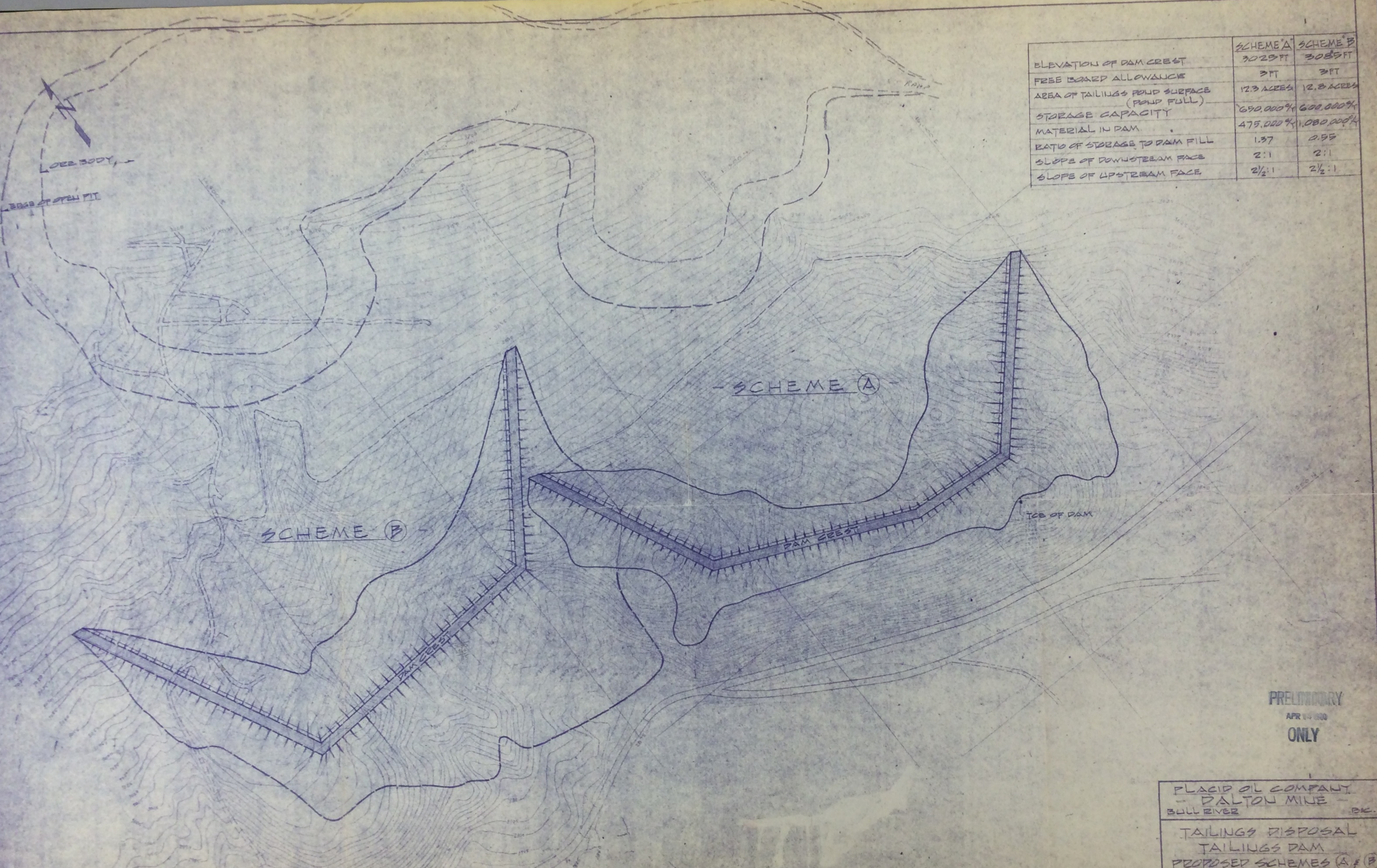


### Wright Engineers Limited Design Drawing Images:

Drawing D-611-46-4301  
Drawing D-611-46-4302  
Drawing D-611-46-4303  
Drawing D-611-46-4303B  
Drawing D-611-46-4304  
Drawing D-611-46-4305

	SCHEME A	SCHEME B
ELEVATION OF DAM CREST	3025 FT	3085 FT
FREE BOARD ALLOWANCE	3 FT	3 FT
AREA OF TAILINGS POND SURFACE (POND FULL)	12.3 ACRES	12.8 ACRES
STORAGE CAPACITY	650,000 CY	600,000 CY
MATERIAL IN DAM	475,000 CY	1,080,000 CY
RATIO OF STORAGE TO DAM FILL	1.37	0.55
SLOPE OF DOWNSTREAM FACE	2:1	2:1
SLOPE OF UPSTREAM FACE	2½:1	2½:1



PRELIMINARY  
APR 14 1960  
ONLY

PLACID OIL COMPANY  
- DALTON MINE -  
BULL RIVER B.C.

TAILINGS DISPOSAL  
TAILINGS DAM  
PROPOSED SCHEMES (A) & (B)

WRIGHT ENGINEERS LIMITED  
VANCOUVER CANADA

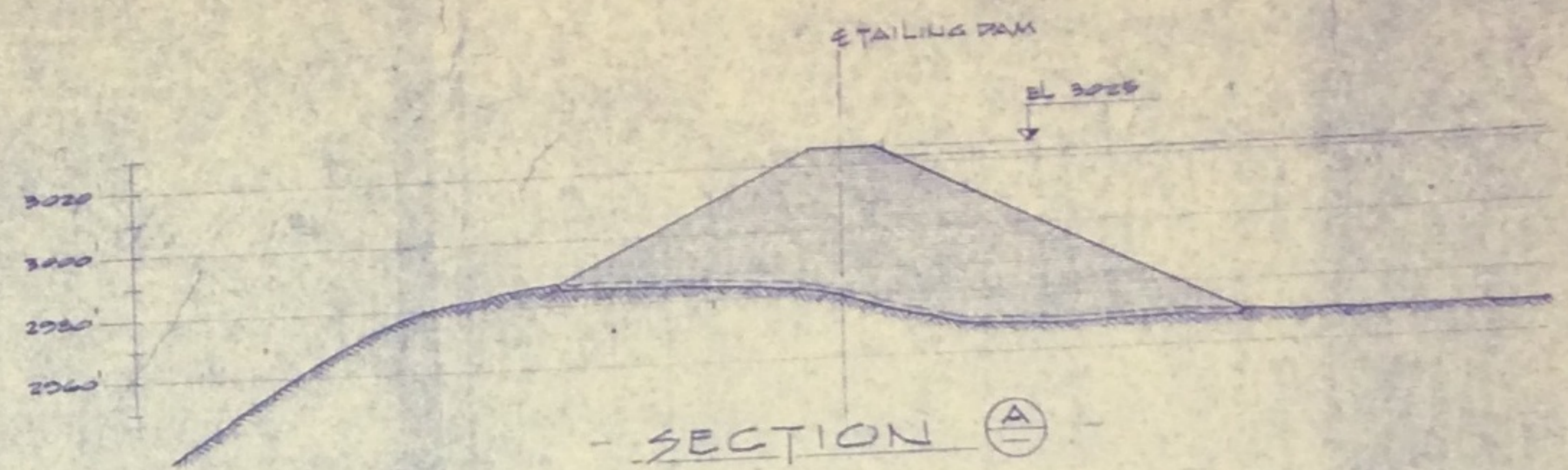
DWG. NO. D 611 46 430!

NO.	DATE	REV.	DESCRIPTION OF REVISION	REFERENCE	NO.	DWG. NO.	REFERENCE	NO.	DWG. NO.

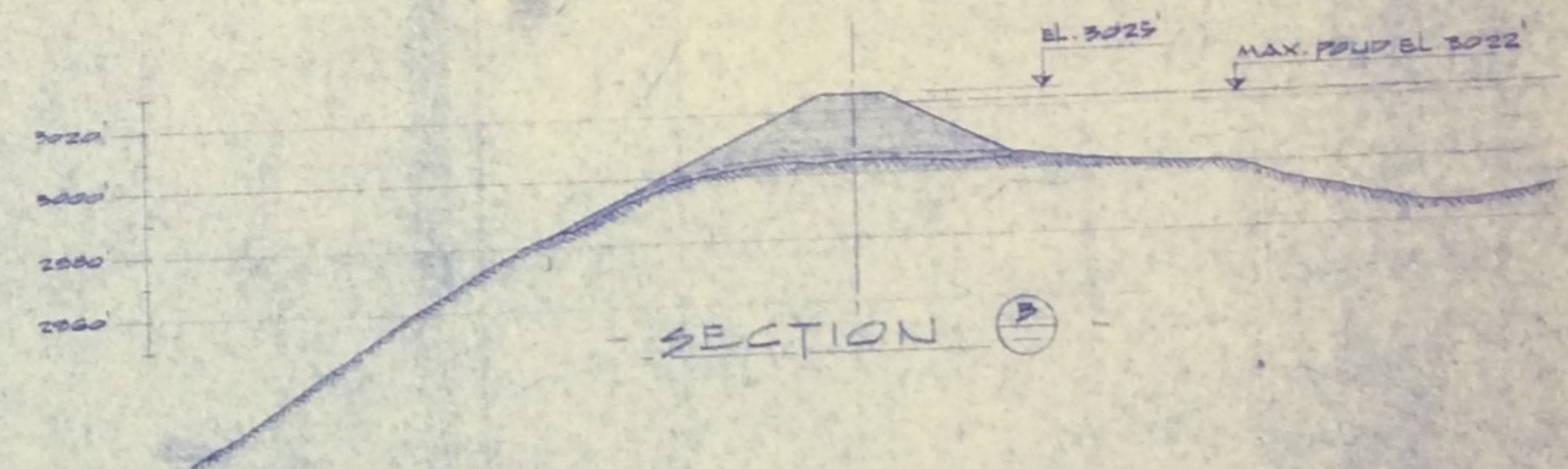
SCALE: 1" = 100'



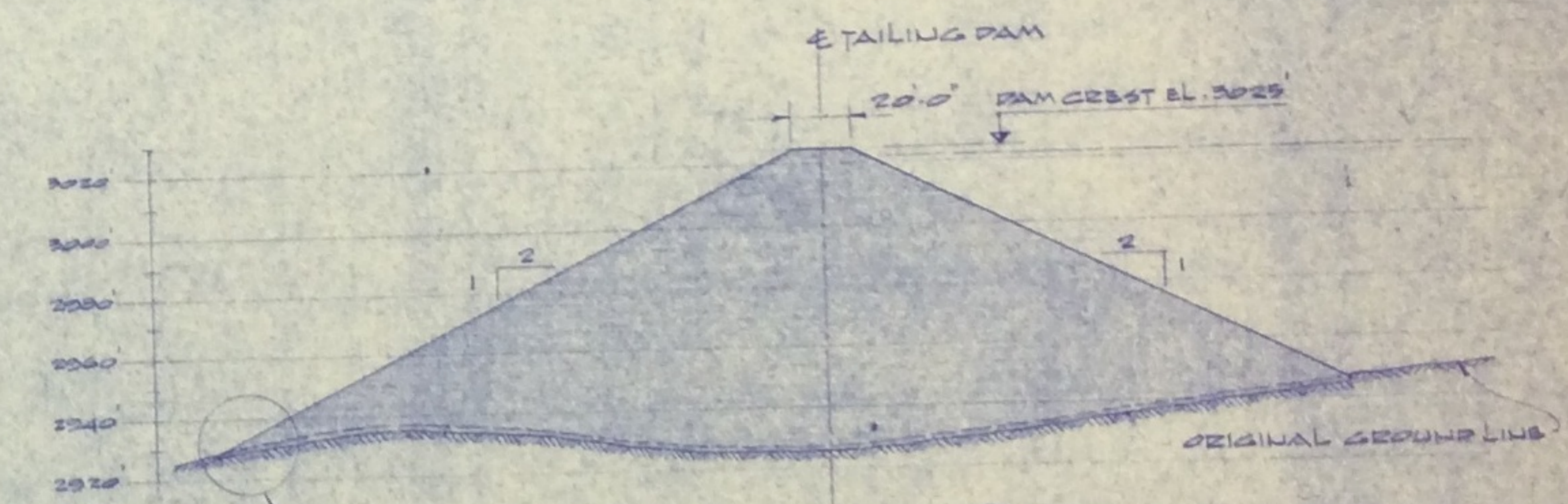
PLAN  
SCALE 1"=100'



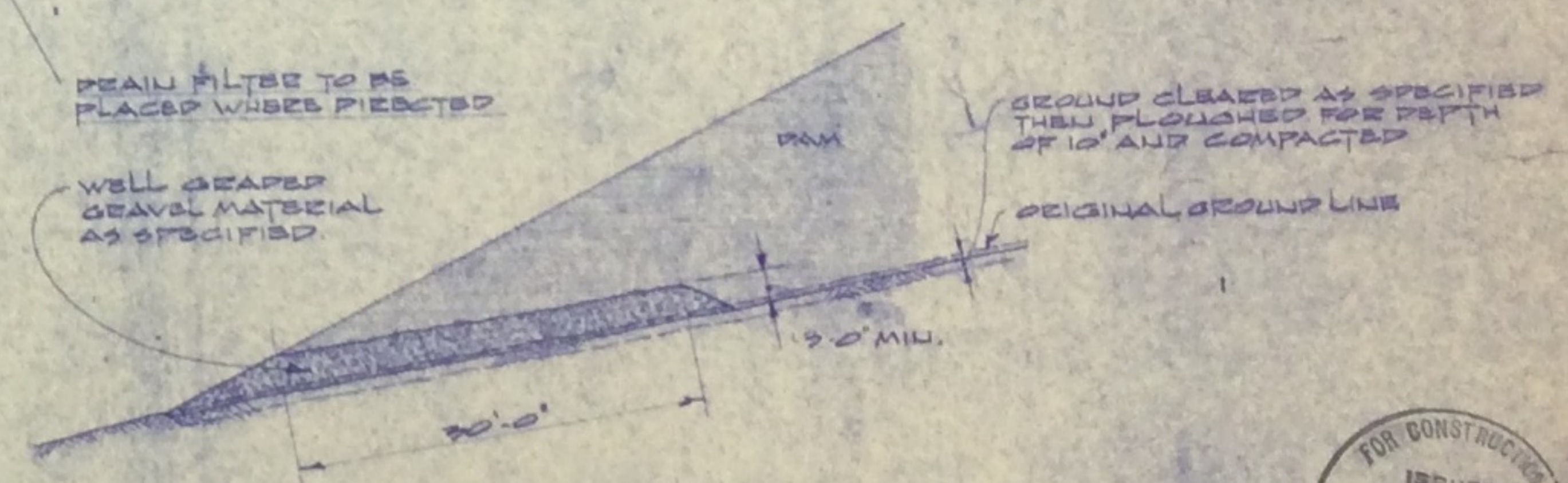
SECTION A



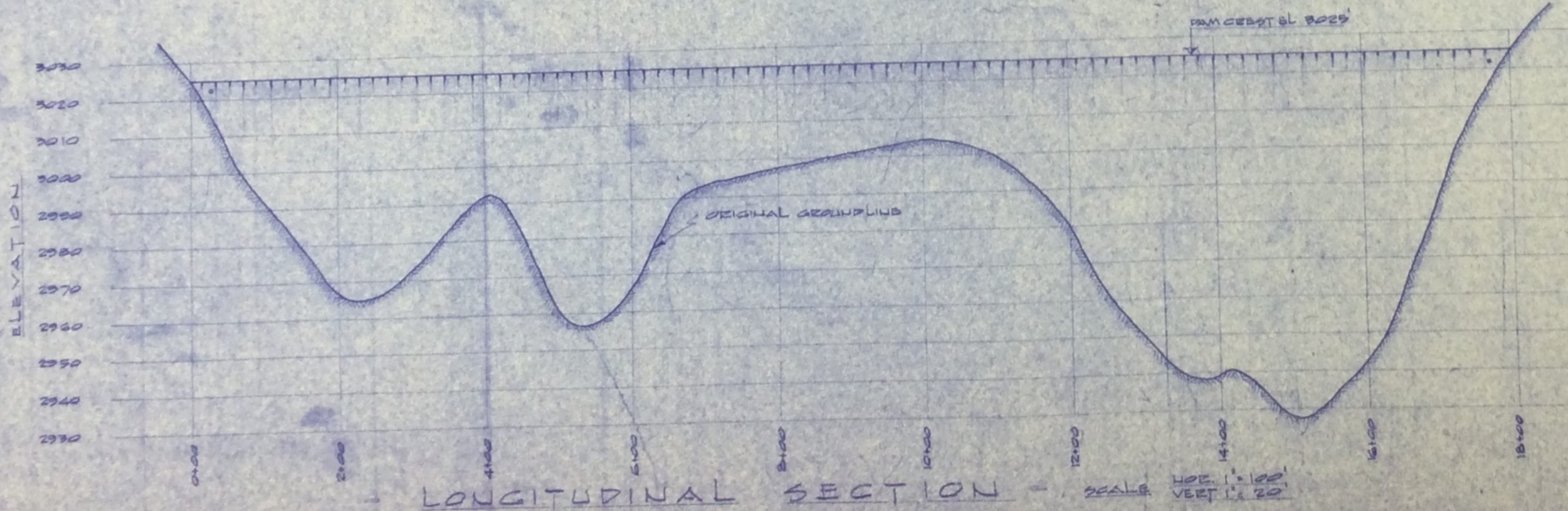
SECTION B



SECTION C  
SCALE 1"=40'



DRAIN FILTER DETAIL  
SCALE 1"=10'



LONGITUDINAL SECTION  
SCALE HORIZ. 1"=100' VERT. 1"=20'



PLACID OIL COMPANY  
BULL RIVER MINE  
BULL RIVER, B.C.

TAILING DISPOSAL  
TAILING DAM  
PLAN & SECTIONS

WRIGHT ENGINEERS LIMITED  
VANCOUVER CANADA

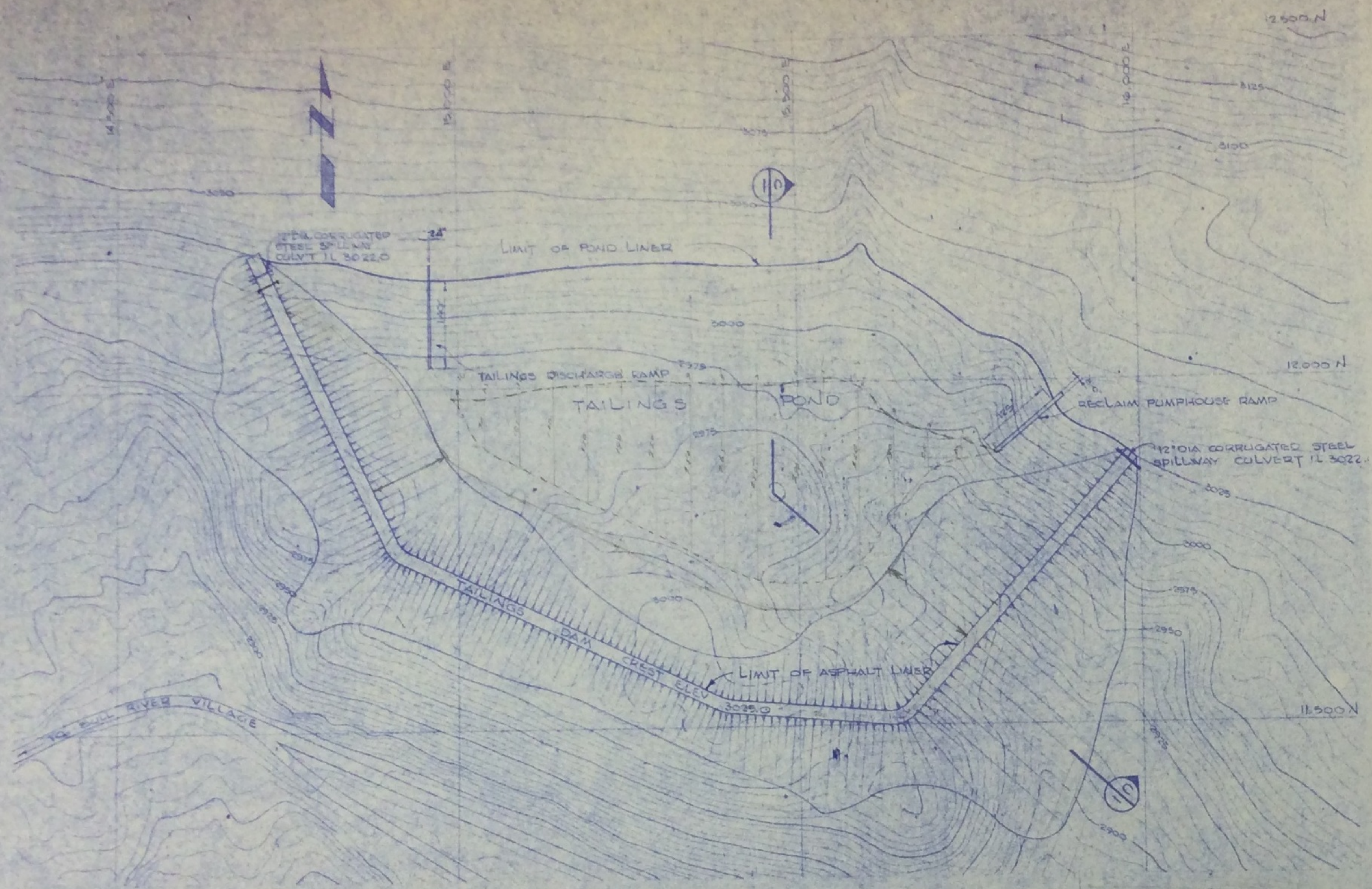
DWG. No. **D 611 46 4302 A**

SCALE AS LISTED

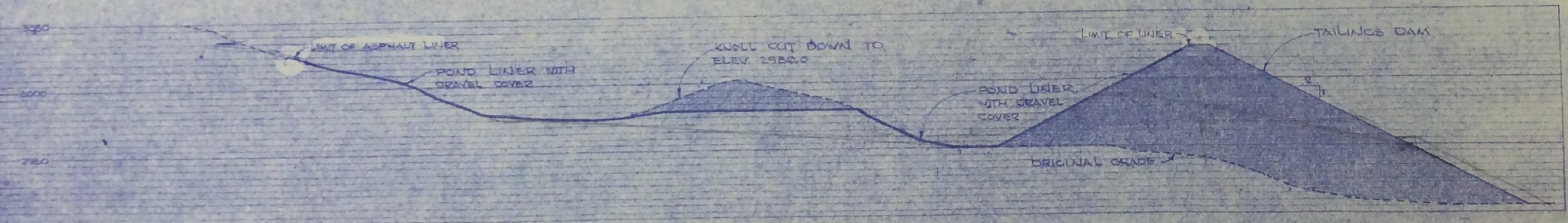
DATE	BY	CHKD	APP'D	DESCRIPTION OF REVISION	DATE	BY	CHKD	APP'D	DESCRIPTION OF REVISION	REFERENCE	NO.	DWG. NO.	REFERENCE	NO.	DWG. NO.
1971	RTS	RTS	RTS	QUOTATION	1971	A			SPILLWAY CULVERTS ADDED						







PLAN -  
SCALE: 1" = 100'



SECTION - C  
SCALE: 1" = 50'

NOTE:  
CONTRACTOR SHALL MAKE WATER  
TIGHT JOINT BETWEEN LINING AND  
CONCRETE SLABS.

QUOTATION  
DEC 11, 1970  
ONLY

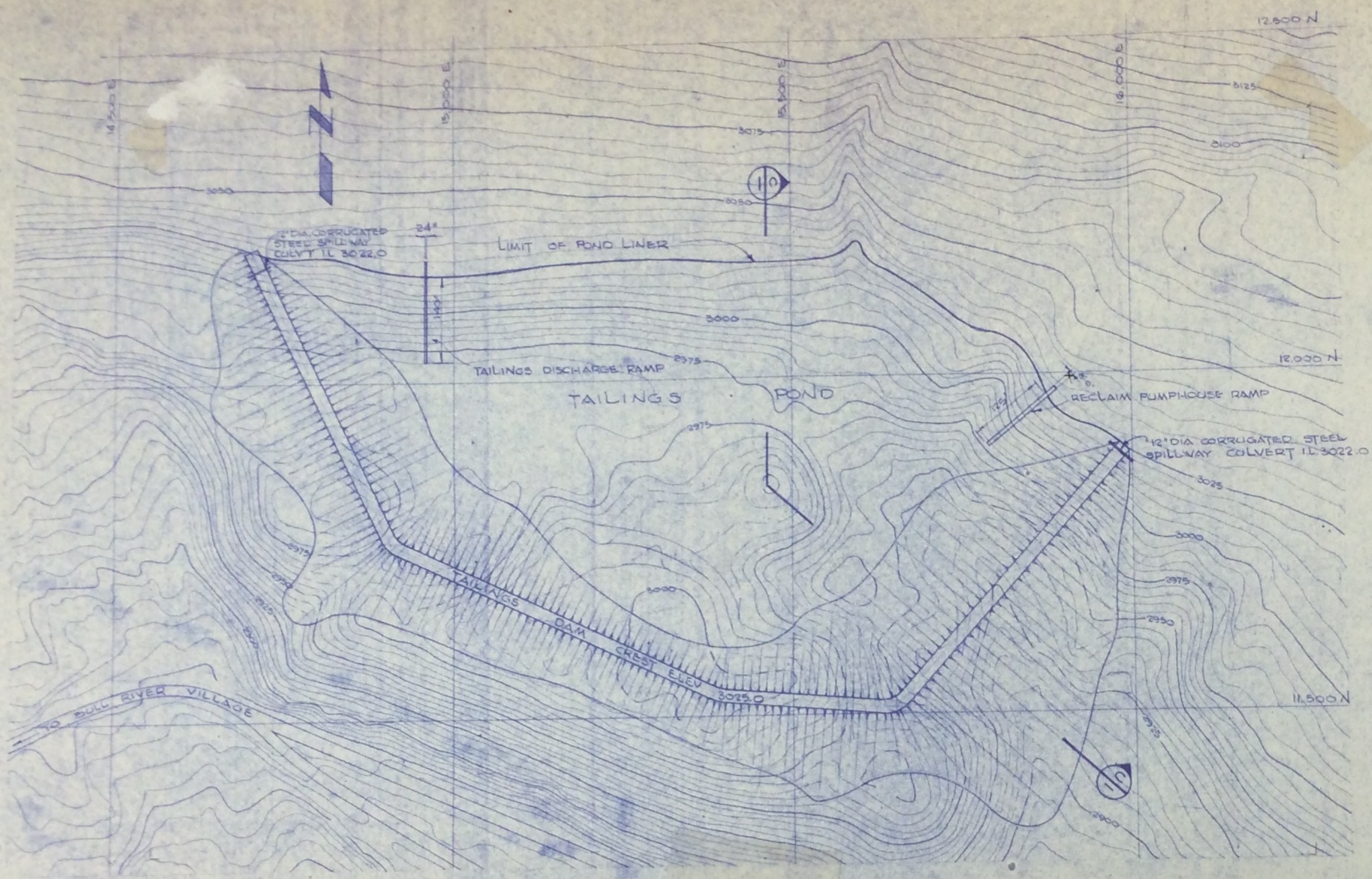
PLACID OIL COMPANY  
BULL RIVER MINE  
BULL RIVER, B.C.

TAILING DISPOSAL  
TAILING POND  
ASPHALT LINER LAYOUT

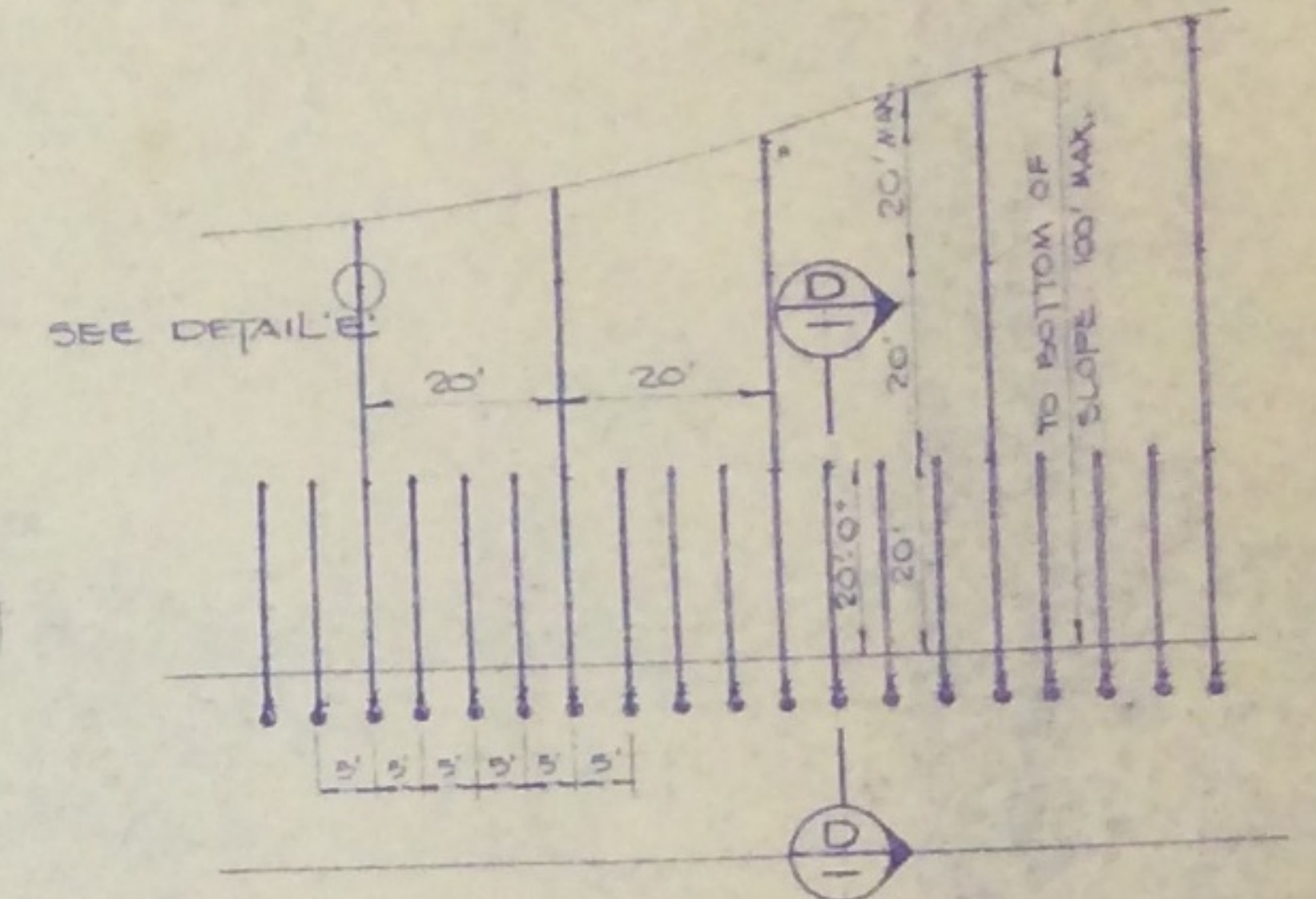
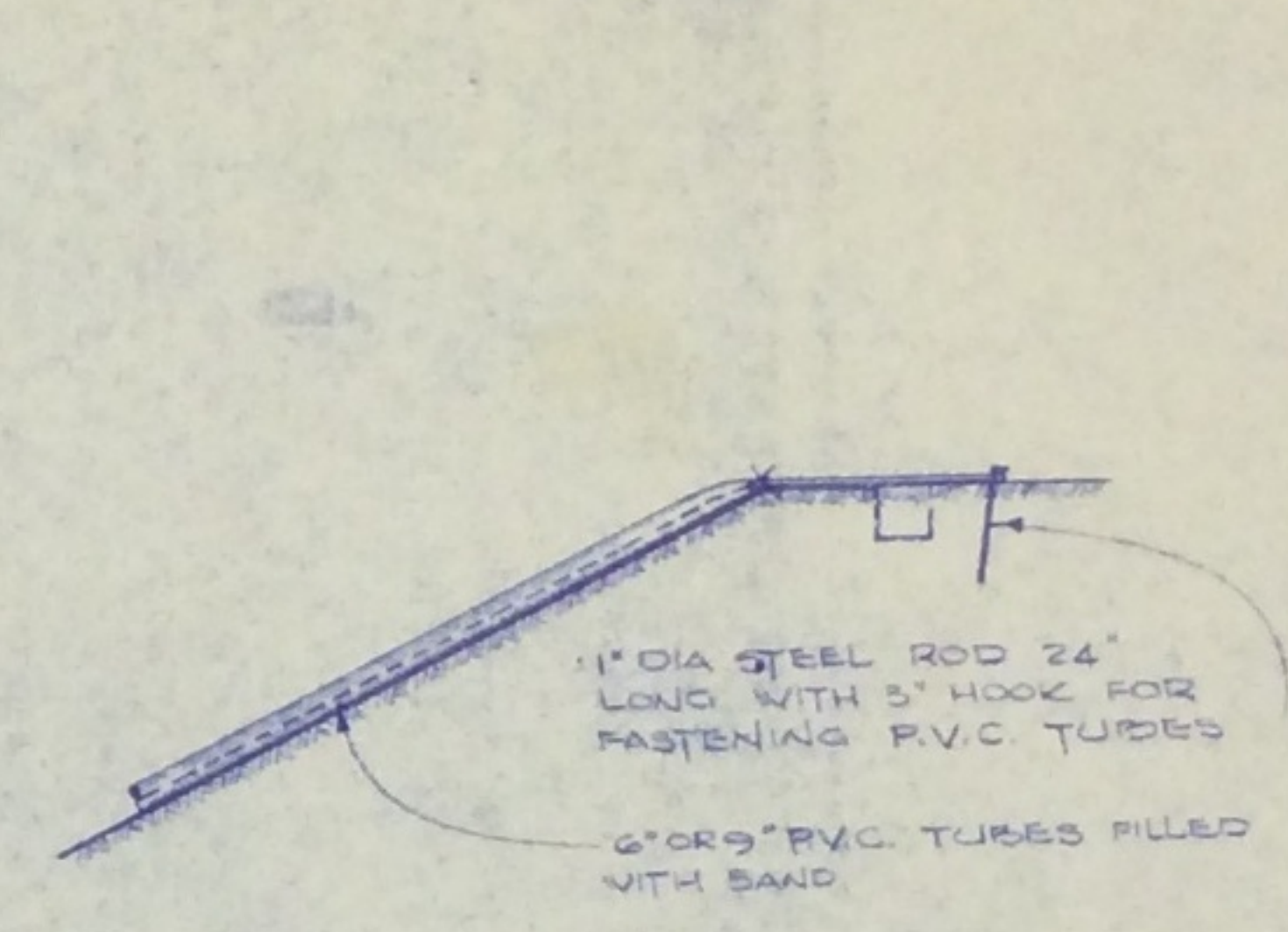
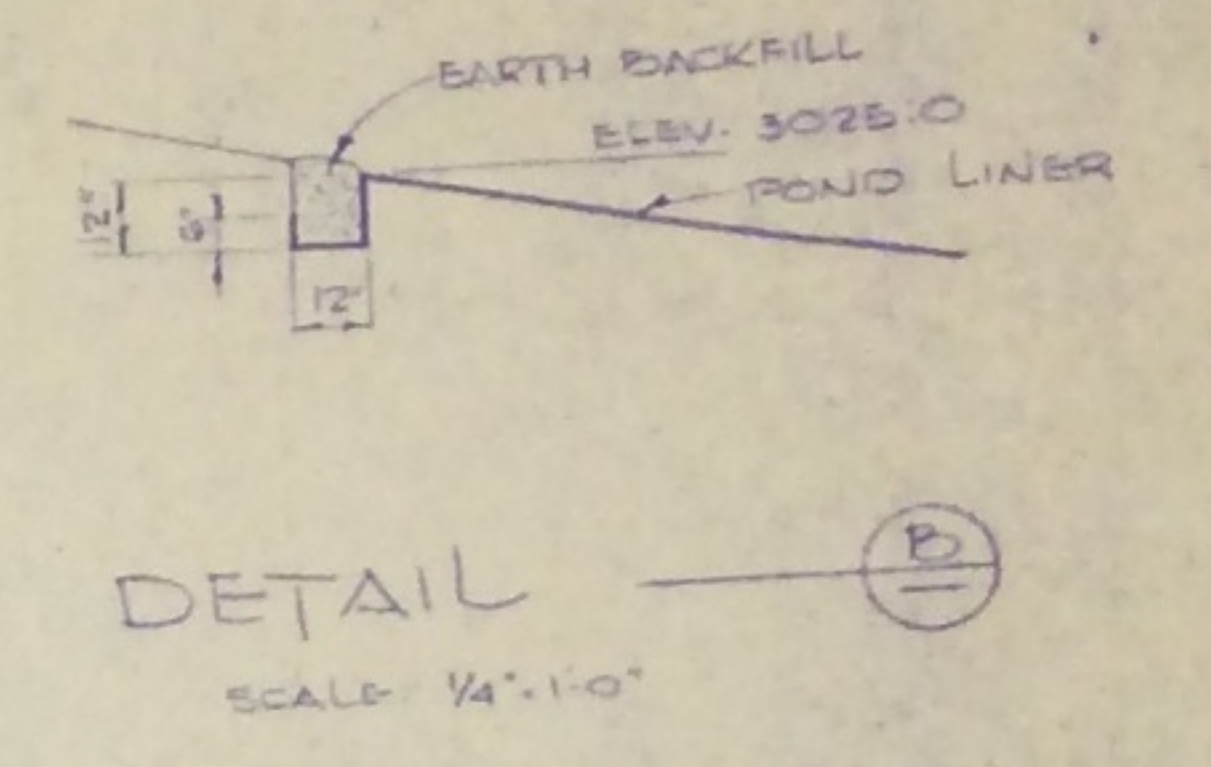
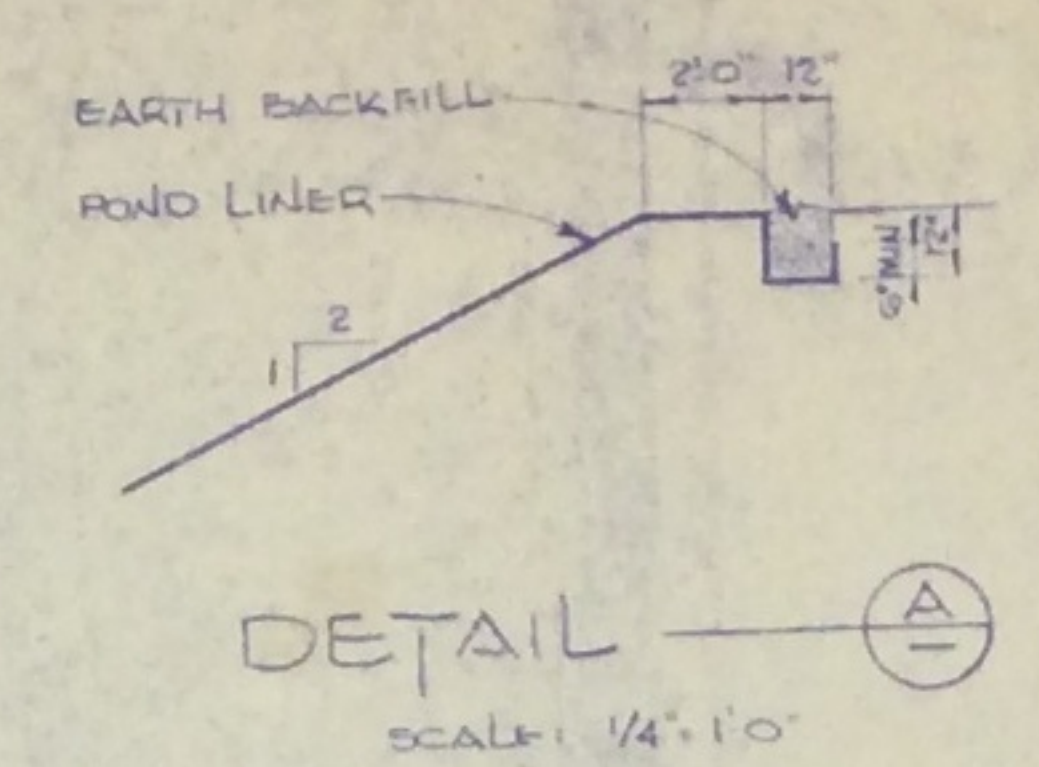
WRIGHT ENGINEERS LIMITED  
VANCOUVER CANADA

DWG. NO. **D 611 46 4304**

NO.	DATE	BY	CHKD.	APPROVED	REVISION	DATE	REV.	DESCRIPTION OF REVISION	REFERENCE	NO.	DWG. NO.	REFERENCE	NO.	DWG. NO.
1	12/11/70	RJS	WVF	WVF	ASPHALT LINER LAYOUT							OVERALL SITE LAYOUT (PROPOSED)	1	D 611-40-4301B
SCALE: AS SHOWN														



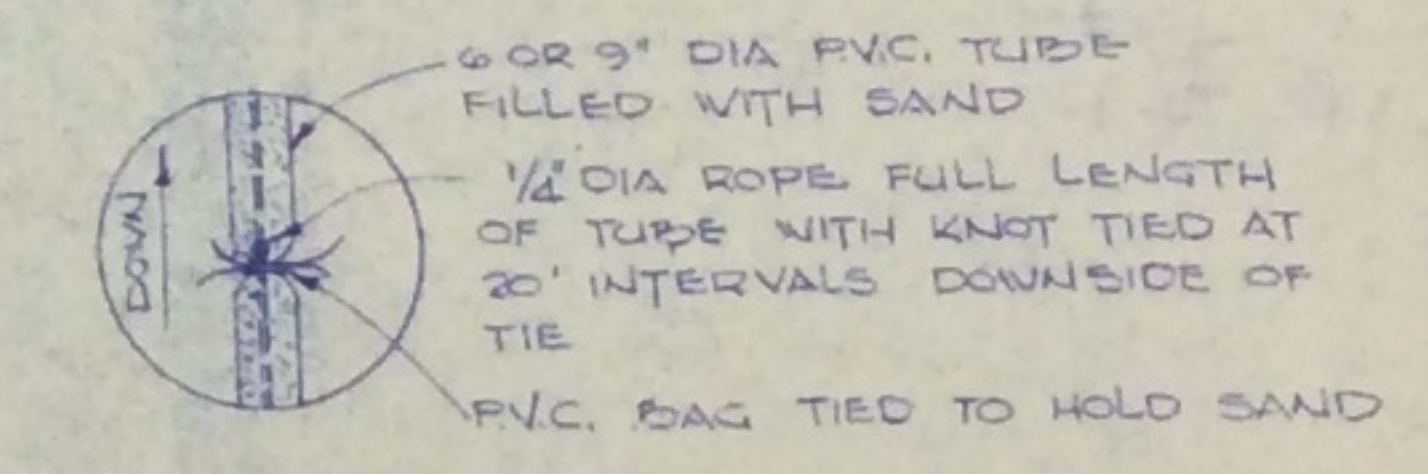
**PLAN**  
SCALE: 1" = 100'



**SECTION D**  
SCALE: 1/4" = 1'0"

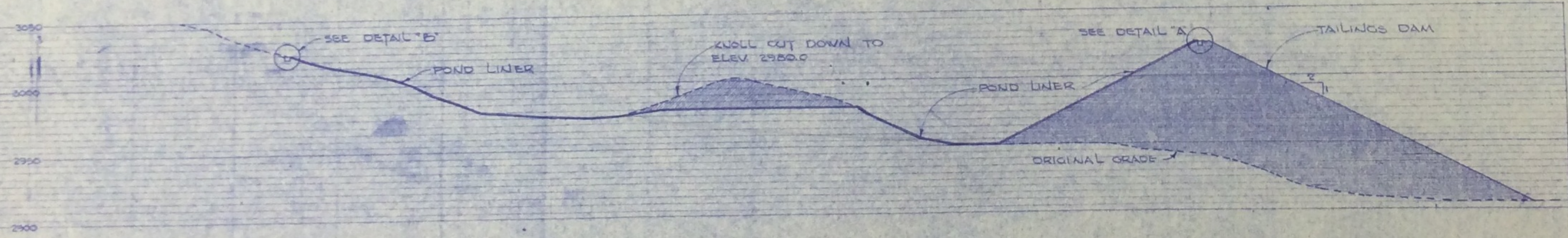
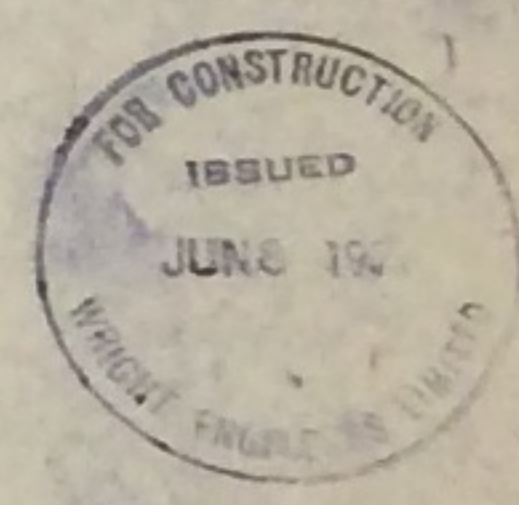
**PLAN**  
SCALE: 1" = 50'

**DETAIL OF P.V.C. TUBE ANCHORS.**



**DETAIL E**  
A.T.S.

**NOTE:**  
CONTRACTOR SHALL MAKE WATER TIGHT JOINT BETWEEN LINING AND CONCRETE SLABS.



**SECTION C**  
SCALE: 1" = 50'

PLACID OIL COMPANY  
**BULL RIVER MINE**  
BULL RIVER, B.C.  
  
TAILING DISPOSAL  
TAILING POND,  
LINER LAYOUT & DETAILS

**WRIGHT ENGINEERS LIMITED**  
VANCOUVER CANADA  
DWG. NO. **D 611 46 4305**

DESIGN	CHECK	APPROVAL	ISSUED FOR	DATE	REV.	DESCRIPTION OF REVISION	DESIGN	CHECK	APPROVAL	ISSUED FOR	DATE	REV.	DESCRIPTION OF REVISION	REFERENCE	NO.	DWG. NO.	REFERENCE	NO.	DWG. NO.	
AJS	MS	AJS	SUBMITTING	4/7/61																

OVERALL SITE LAYOUT (PROPOSED) 10611-40-4305-B  
SCALE: AS SHOWN